

## Bar or Cable Primary Current Transformers HT SERIES



- **Indoor or outdoor**
- **3.6- 7.2 - 12 - 17.5 -24 KV**
- **Primary current from 100 to 30000A**
- **Ith up to 1000 Ipn**
- **Cast-resin insulated**

Current transformers vacuum moulded in self-extinguishing epoxy resin for the measurement of AC currents from 100 to 30000A. This range is also suitable for power generation. They have been designed to be installed in bus ducts between generator and transformer. They enable very high performance to be achieved.

### Technical data

Rated insulation level	Up to 24/50/125 kV
Primary current I <sub>pn</sub>	100 to 30000A
Secondary current I <sub>sn</sub>	5 or 1 A
Frequency	50 or 60 Hz
Rated output	1 to 1000 VA
Accuracy class	0.1 - 0.2 - 0.2S -0.5-0.5S-1-3-5P-10P-clX
Security factor	5 to 20
Accuracy limit factor	5 - 10 - 15 - 20 -30-50
Short-time thermal current I <sub>th</sub>	80 to 1000 I <sub>pn</sub>
Dynamic current I <sub>dyn</sub>	2.5I <sub>th</sub>
Insulation class	E
Altitude	1000 m
Ambient temperature	-5C° to + 40 C° -25C° to + 40 C° -40C° to + 40 C°
Standards	IEC60044-1, IEC61869-2, IEC60044-6

### Other characteristics on request

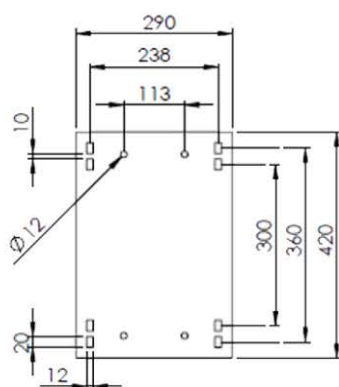
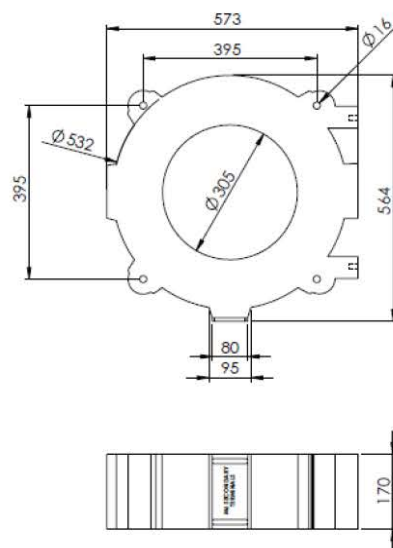
Secondary current I <sub>sn</sub>	0.005 to 10A
Rated insulation level	25/50/150 A
Multiple cores	Up to 3 cores
Continues thermal current	1.2 to 1.5I <sub>pn</sub> and 2I <sub>pn</sub>
Ambient temperature	Up to + 110C°
Standard	ANSI C57.13, IEC60044-6, BS, A, VDE

\*This document is the property of Pars Shar and maybe changed without prior notice\*

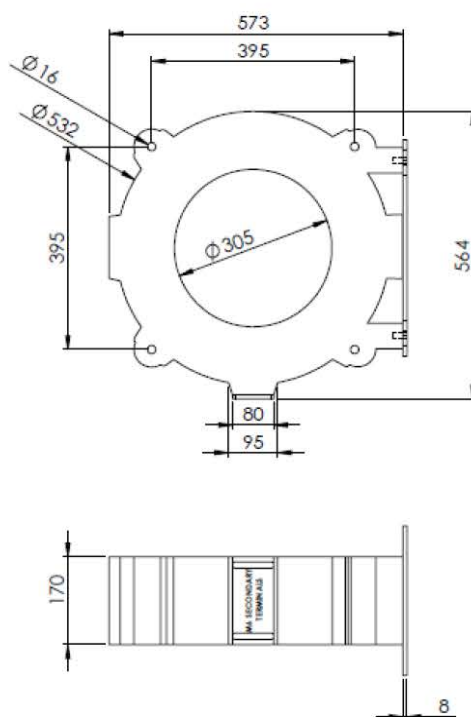


## Selection dimension

## Without Plate



## With Plate



\*This document is the property of Pars Shar and maybe changed without prior notice\*